

*Plano
Independent
School
District*



Quarterly
Report
4Q17

*Learn from Yesterday...
Understand Today...
Plan for Tomorrow*



TEMPLETON
DEMOGRAPHICS



Economic Conditions – DFW Area (December 2017)

2.8%

101,539 new jobs
National rate 1.2%



Job Growth

Unemployment Rate



U.S. 3.9%
Texas 3.7%
DFW MSA 3.1%
Plano 3.0%

-0.5%

33,262

3,202 more starts than 4Q16



Annual Home Starts





Plano ISD Housing Activity

2017 Home Sales by Transaction Type



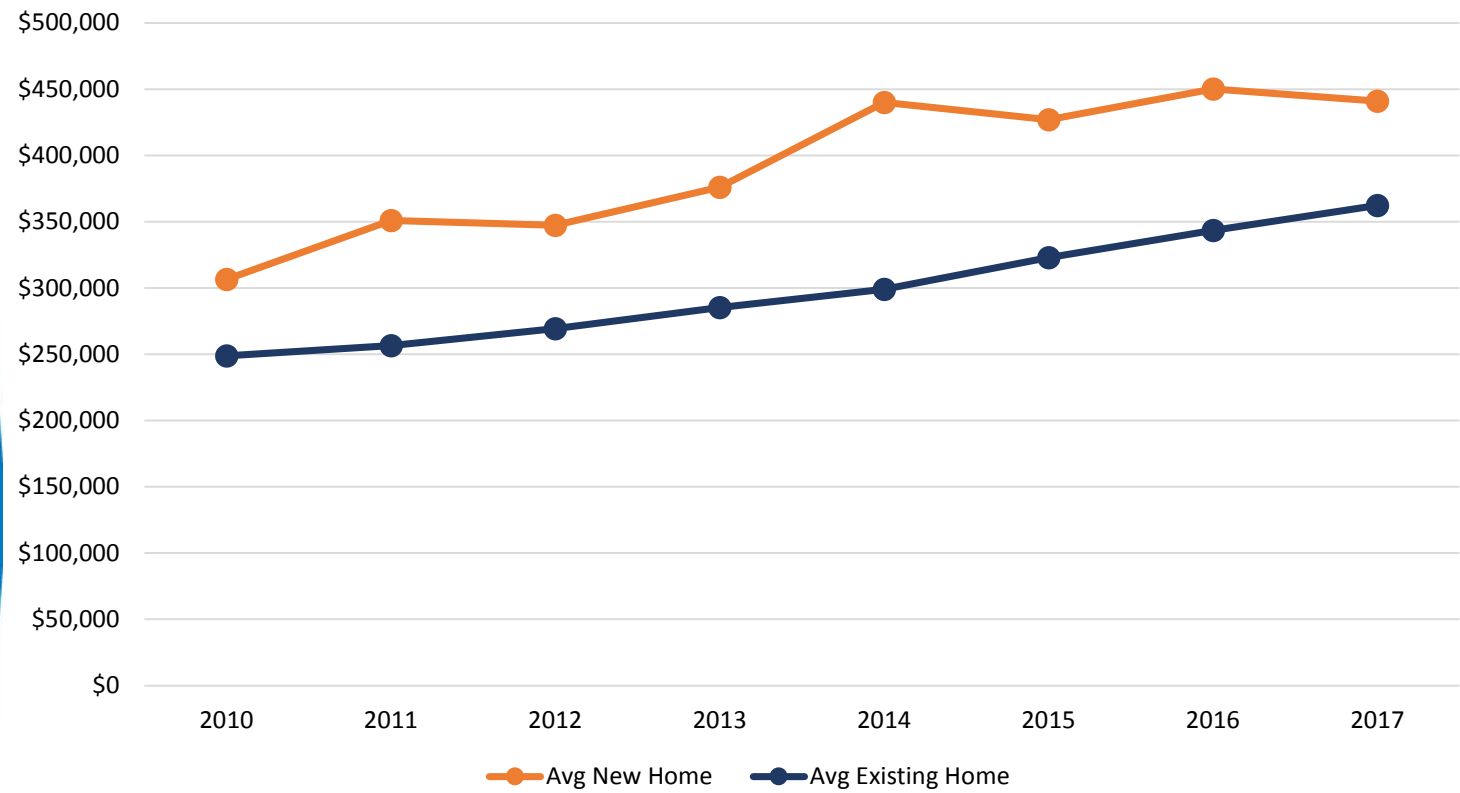
- Plano ISD had nearly 9,000 home sales in 2017, and roughly 6.8% were of new homes
- The average price for a new home in Plano ISD in 2017 was \$441,107
- The average price for an existing home in Plano ISD in 2017 was \$362,449





Plano ISD Historical Home Price Analysis

Average New vs. Existing Home Sale Prices, 2010-2017



	Avg New Home	Avg Existing Home
2010	\$306,458	\$248,787
2011	\$351,074	\$256,546
2012	\$347,429	\$269,423
2013	\$376,029	\$285,218
2014	\$440,198	\$298,974
2015	\$427,136	\$322,946
2016	\$450,352	\$343,572
2017	\$441,107	\$362,449

- Since 2010, the average price for a new home in Plano ISD has risen nearly 44%, an increase of nearly \$134,650
- The average price for an existing home in Plano ISD has risen 45% in the last seven years, an increase of more than \$113,650





DFW New Home Ranking Report

ISD Ranked by Annual Closings – 4Q17

Rank	District Name	Annual Starts	Annual Closings	VDL	Future
1	Frisco ISD	2,486	2,729	4,488	5,628
2	Prosper ISD	2,890	2,692	6,351	24,785
3	Northwest ISD	2,121	2,206	2,014	25,518
4	Denton ISD	2,084	1,902	2,613	20,065
5	Dallas ISD	2,041	1,854	1,733	7,339
6	Little Elm ISD	1,473	1,258	1,227	3,436
7	Lewisville ISD	1,141	1,188	1,943	4,485
8	Rockwall ISD	968	961	1,862	8,291
9	Eagle Mt.-Saginaw ISD	1,181	925	1,377	19,265
10	McKinney ISD	788	863	1,626	8,084
11	Forney ISD	1,120	850	1,595	13,949
12	Wylie ISD	813	759	1,164	3,996
13	Mansfield ISD	654	710	1,018	6,836
14	Allen ISD	711	707	1,406	1,208
15	Midlothian ISD	768	611	1,331	19,550
16	Fort Worth ISD	587	606	824	5,034
17	Garland ISD	411	578	390	4,065
18	Crowley ISD	653	537	996	12,584
19	Waxahachie ISD	574	511	754	9,446
20	Keller ISD	372	487	708	1,746
21	Coppell ISD	407	481	337	402
22	Plano ISD	583	459	1,253	2,981*
23	Aledo ISD	546	414	1,169	15,056
24	Anna ISD	497	409	361	4,652
25	HEB ISD	465	393	593	4,386

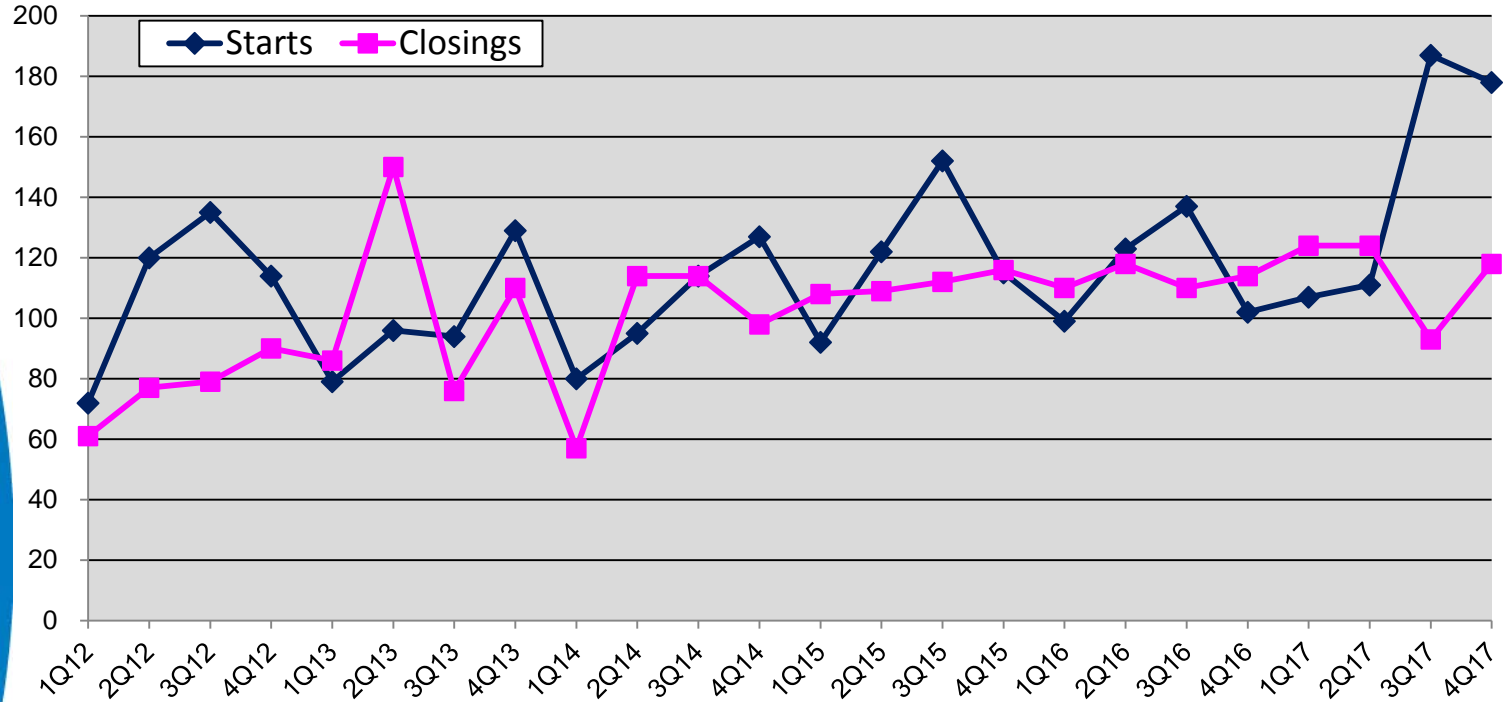
* Based on additional research by TD Staff.





New Housing Activity

Plano ISD



Starts	2012	2013	2014	2015	2016	2017
1Q	68	78	80	92	99	107
2Q	108	96	95	122	123	111
3Q	134	95	114	153	137	187
4Q	114	129	126	115	102	178
Total	424	398	415	482	461	583

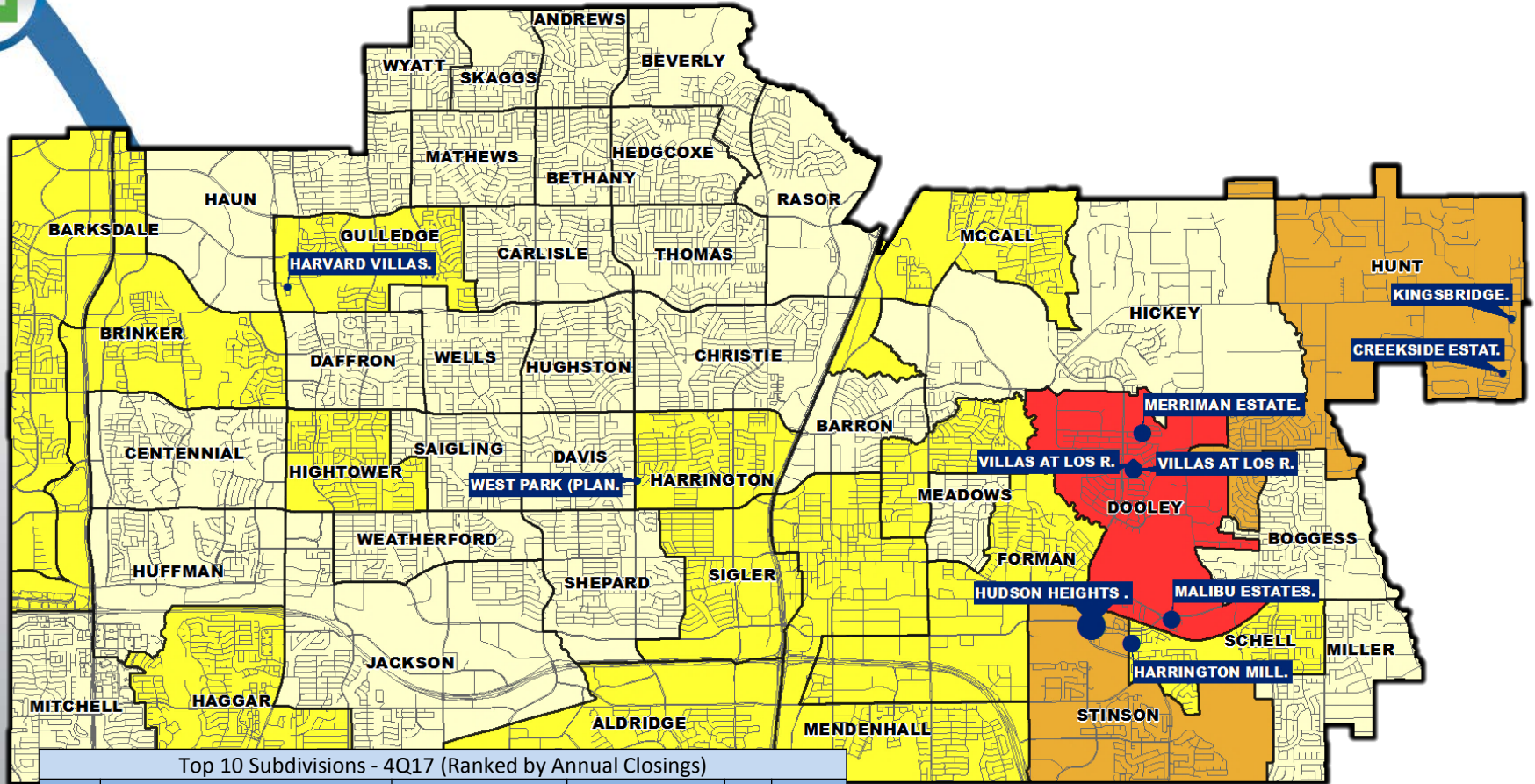
Closings	2012	2013	2014	2015	2016	2017
1Q	55	86	57	108	110	124
2Q	68	150	114	109	118	124
3Q	79	76	114	112	110	93
4Q	90	110	98	116	114	118
Total	292	422	383	445	452	459

- Plano ISD posted the highest 4th quarter starts total in over 7 years
- After a rebound in 4Q closings, the district closed more than 450 homes for the second consecutive year
- New home inventory continued to climb after a strong 4th quarter in both starts and closings





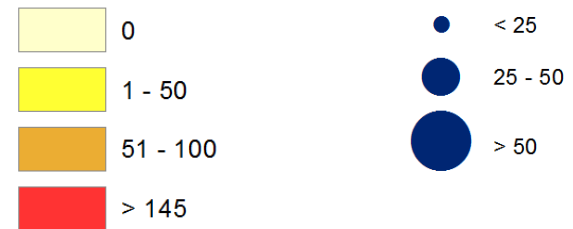
Annual Closing Distribution 4Q17



Top 10 Subdivisions - 4Q17 (Ranked by Annual Closings)

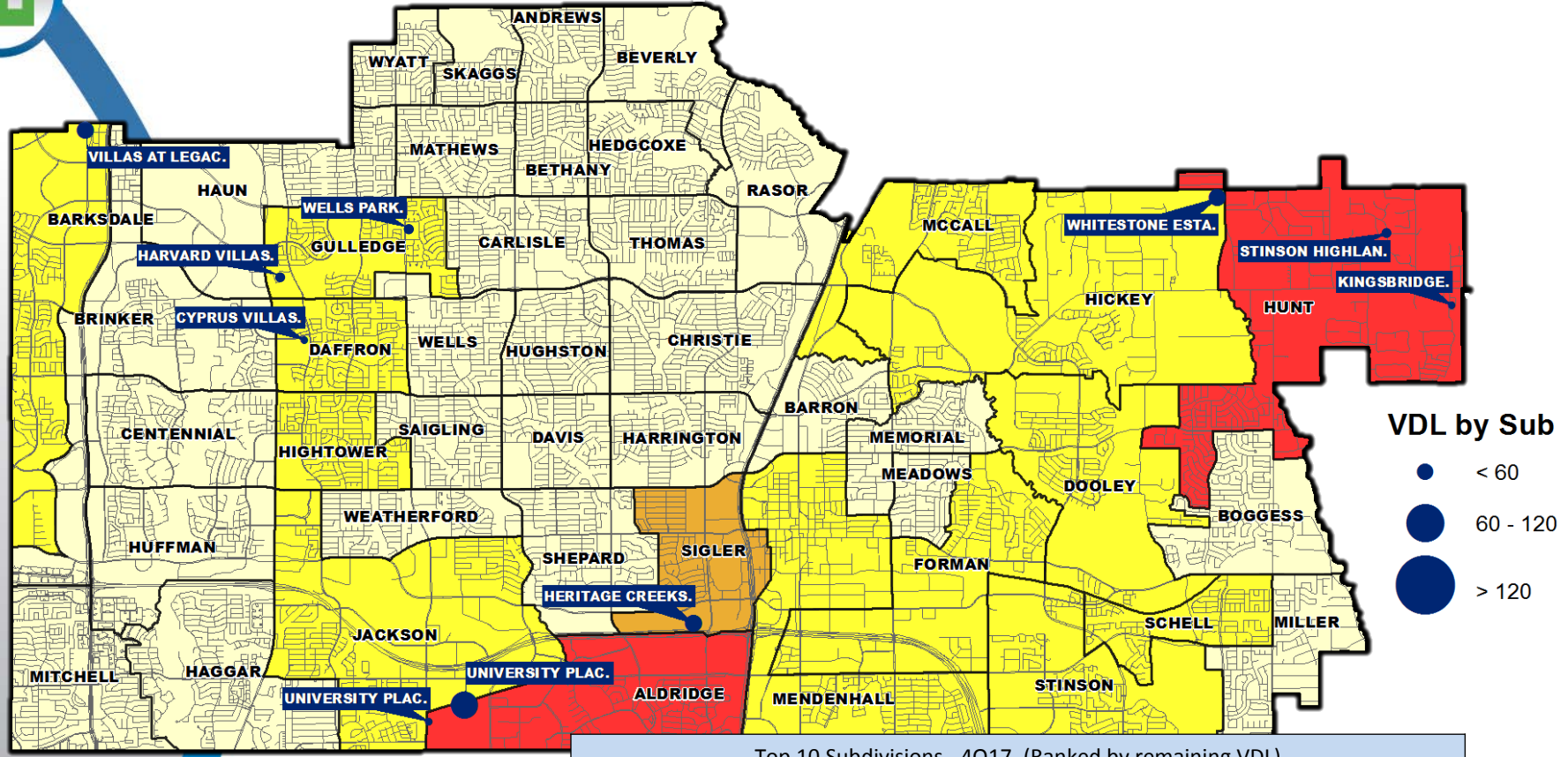
Rank	Subdivision	Elementary Zone	Annual Closings	VDL	Future
1	HUDSON HEIGHTS (PLANO)	STINSON	59	3	0
2	MERRIMAN ESTATES (PLANO)	DOOLEY	48	5	0
3	VILLAS AT LOS RIOS SOUTH	DOOLEY	40	0	0
4	MALIBU ESTATES	DOOLEY	28	16	0
5	HARRINGTON MILLS	SCHELL	27	36	0
6	VILLAS AT LOS RIOS NORTH	DOOLEY	21	3	0
7	KINGSBRIDGE	HUNT	19	52	30
8	WEST PARK (PLANO)	HARRINGTON	19	0	0
9	TRAILS OF GLENWOOD	MCCALL	18	31	0
10	HARVARD VILLAS	GULLEDGE	18	46	0
TOTALS			297	192	30

Annual Closings By Elem Annual Closings by Sub





Vacant Developed Lots 4Q17



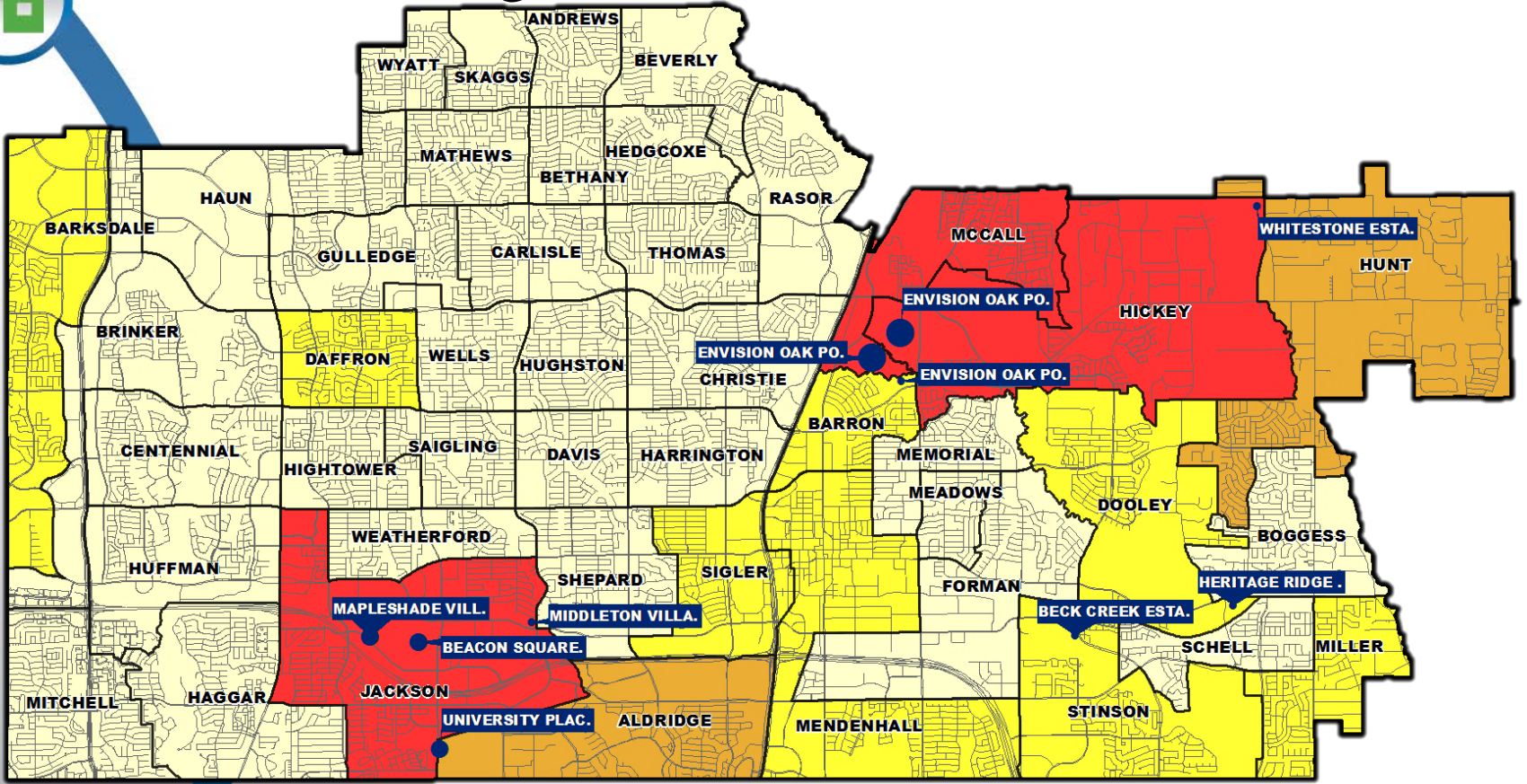
Top 10 Subdivisions - 4Q17 (Ranked by remaining VDL)

Rank	Subdivision	Elementary Zone	Annual Closings	VDL	Future
1	UNIVERSITY PLACE ADDITION TWNHM.	ALDRIDGE	0	149	0
2	HERITAGE CREEKSIDE	SIGLER	2	116	27
3	VILLAS AT LEGACY WEST (PISD)	BARKSDALE	0	69	0
4	WHITESTONE ESTATES	HICKEY	0	67	196
5	KINGSBRIDGE	HUNT	19	52	30
6	UNIVERSITY PLACE ADDITION	ALDRIDGE	7	50	263
7	CYPRUS VILLAS	DAFFRON	0	50	0
8	STINSON HIGHLANDS	HUNT	10	47	0
9	HARVARD VILLAS	GULLEDGE	18	46	0
10	WELLS PARK	GULLEDGE	0	46	0
TOTALS			56	692	516



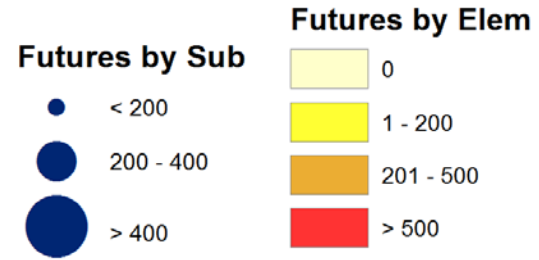


Future Lots 4Q17



Top 10 Subdivisions - 4Q17 (Ranked by Future Inventory)

Rank	Subdivision	Elementary Zone	Annual Closings	VDL	Future
1	ENVISION OAK POINT (MCCALL ELEM)	MCCALL	0	0	576
2	ENVISION OAK POINT (HICKEY ELEM)	HICKEY	0	0	461
3	BEACON SQUARE	JACKSON	0	0	294
4	UNIVERSITY PLACE ADDITION	ALDRIDGE	7	50	263
5	MAPLESHADE VILLAGE	JACKSON	0	0	243
6	WHITESTONE ESTATES	HICKEY	0	67	196
7	BECK CREEK ESTATES	STINSON	0	0	131
8	MIDDLETON VILLAS	JACKSON	0	40	123
9	ENVISION OAK POINT (BARRON ELEM)	BARRON	0	0	115
10	HERITAGE RIDGE ESTATES	DOOLEY	0	0	112
TOTALS			7	157	2,514








Overall Housing Data

By Elementary Attendance Zone

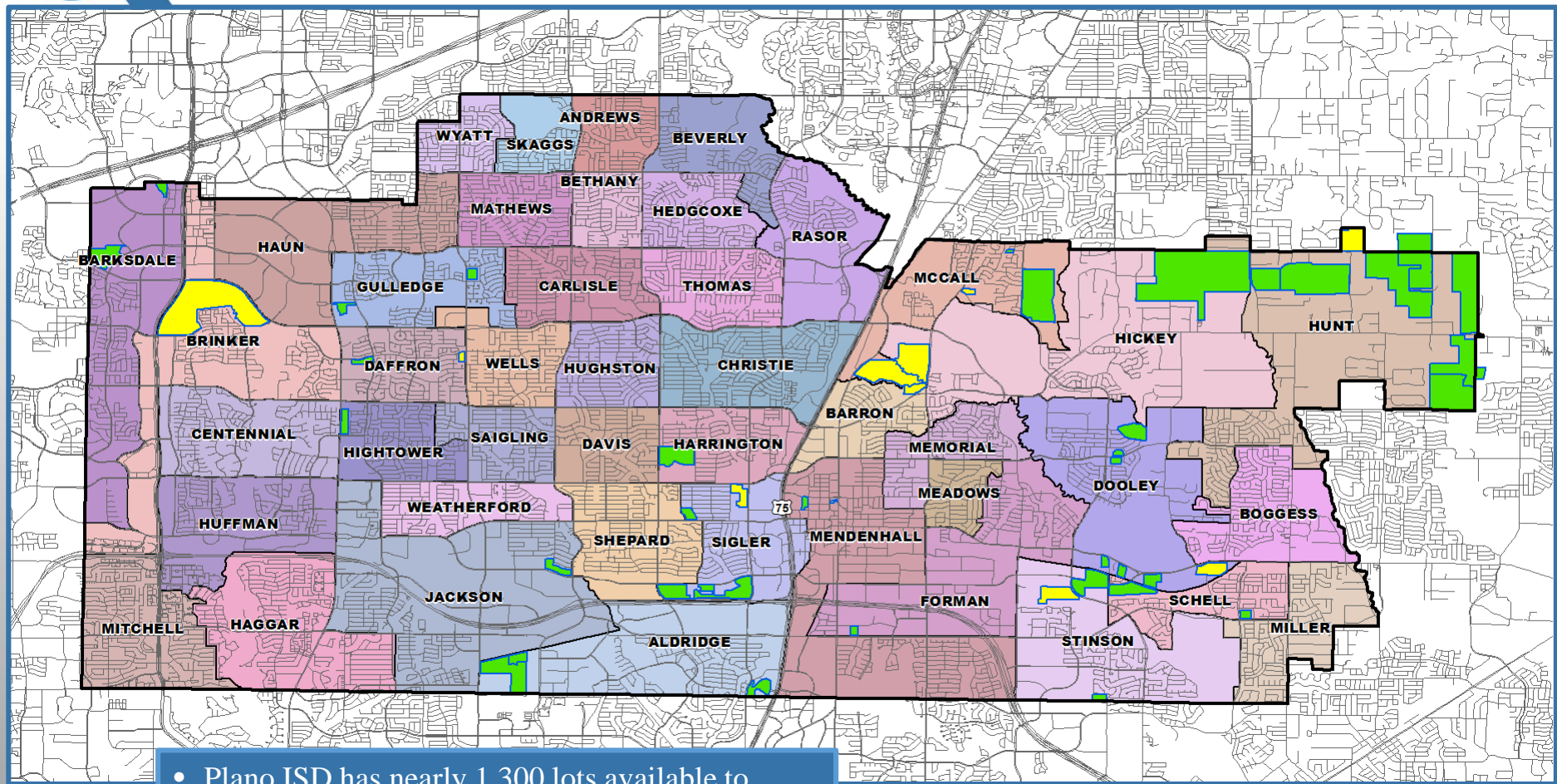
Elementary	Annual Starts	Quarter Starts	Annual Closings	Quarter Closings	Under Construction	Inventory	Vacant Dev. Lots	Futures
ALDRIDGE	85	52	8	7	69	78	240	263
ANDREWS	0	0	0	0	0	0	0	0
BARKSDALE	49	16	6	0	51	52	86	11
BARRON	0	0	0	0	0	0	0	115
BRINKER	0	0	1	0	0	0	0	0
CENTENNIAL	1	0	0	0	1	1	0	0
DAFFRON	0	0	0	0	0	0	50	30
DOOLEY	114	17	145	45	37	61	70	150
FORMAN	12	5	2	2	9	10	20	0
GULLEDGE	21	13	18	10	14	23	92	0
HAGGAR	1	0	1	0	1	1	0	0
HARRINGTON	3	0	19	1	0	2	0	0
HICKEY	7	0	0	0	7	0	75	657
HIGHTOWER	21	5	16	6	7	19	27	0
HUNT	76	28	68	16	46	75	241	219
JACKSON	21	0	0	0	21	21	40	660
MCCALL	19	8	47	2	8	17	37	599
MEMORIAL	4	0	8	3	0	0	0	0
MENDENHALL	15	7	9	3	8	12	40	24
MILLER	0	0	0	0	0	0	0	37
SCHELL	39	9	40	10	19	34	64	0
SIGLER	42	16	10	3	23	36	138	73
STINSON	53	7	61	13	16	22	33	143
Grand Totals	583	183	459	121	337	464	1,253	2,981

 Highest activity in the category
 Second highest activity in the category
 Third highest activity in the category





District Housing Overview



- Plano ISD has nearly 1,300 lots available to build on
- Groundwork is currently underway on nearly 500 lots in PISD
- The district has nearly 3,000 future lots planned

Active Subdivision

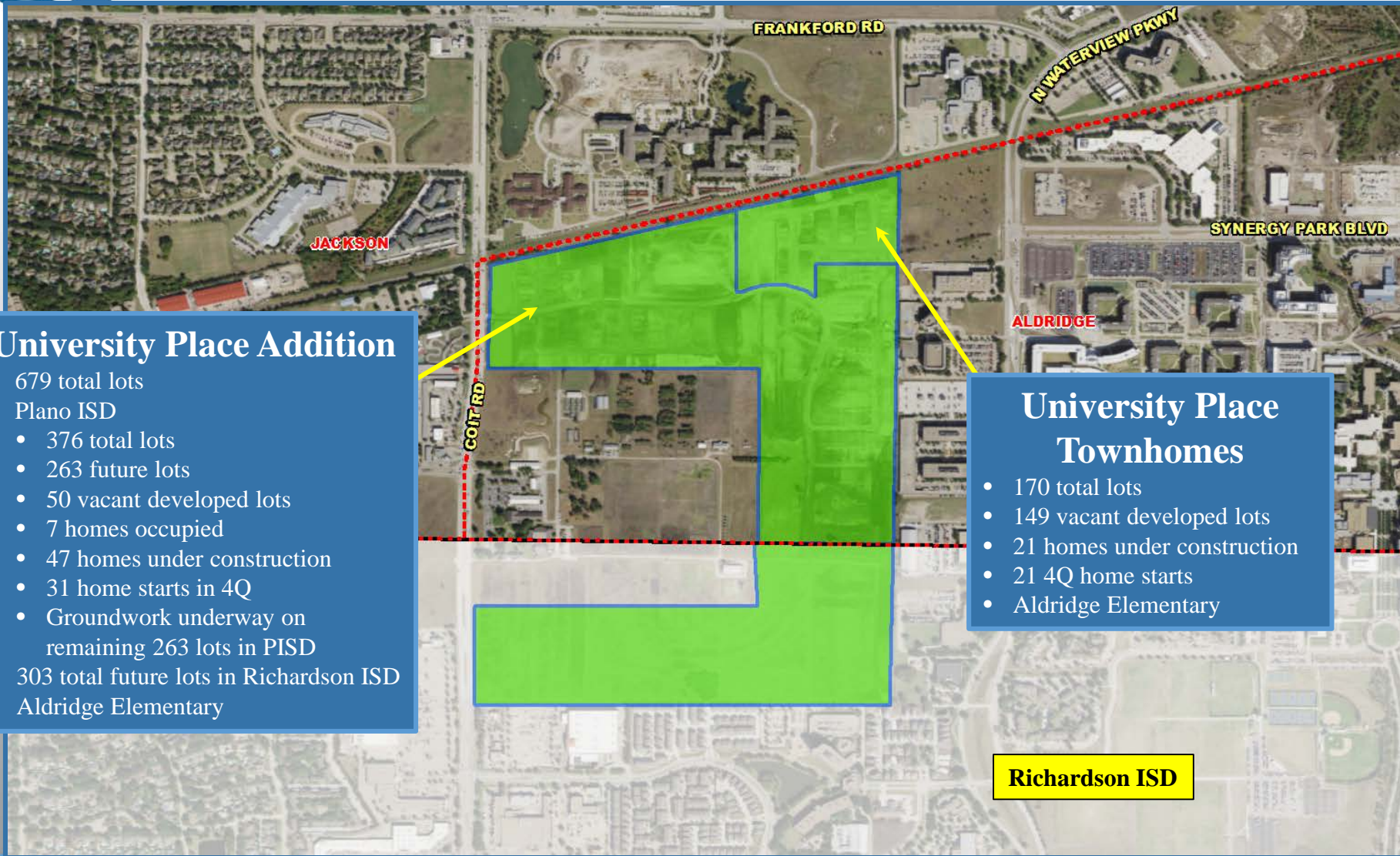
Future Subdivision





Residential Activity

University Place Addition & University Place Townhomes



University Place Addition

- 679 total lots
- Plano ISD
 - 376 total lots
 - 263 future lots
 - 50 vacant developed lots
 - 7 homes occupied
 - 47 homes under construction
 - 31 home starts in 4Q
 - Groundwork underway on remaining 263 lots in PISD
- 303 total future lots in Richardson ISD
- Aldridge Elementary

University Place Townhomes

- 170 total lots
- 149 vacant developed lots
- 21 homes under construction
- 21 4Q home starts
- Aldridge Elementary

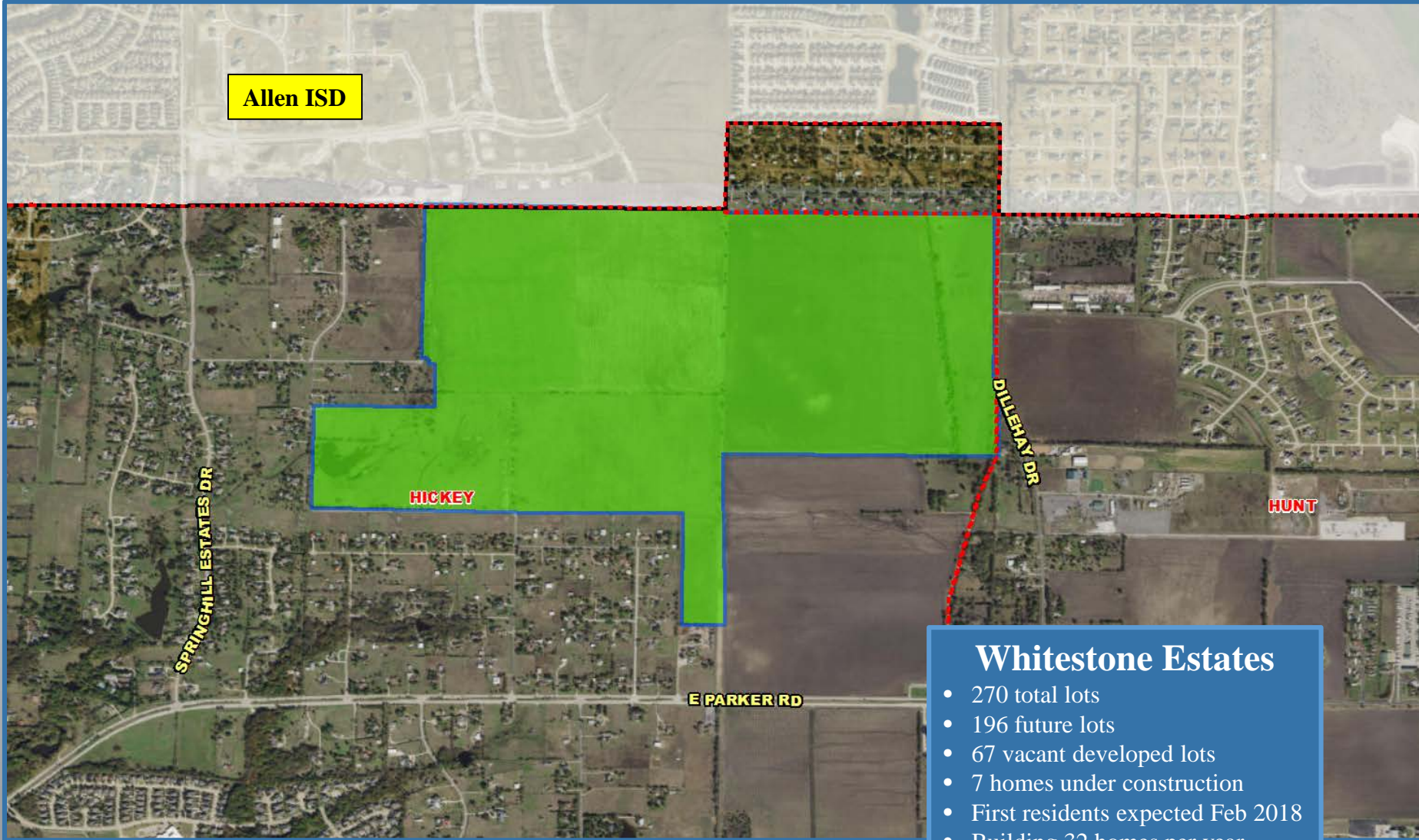
Richardson ISD





Residential Activity

Whitestone Estates



Whitestone Estates

- 270 total lots
- 196 future lots
- 67 vacant developed lots
- 7 homes under construction
- First residents expected Feb 2018
- Building 32 homes per year
- Hickey Elementary





Future Residential Activity

Heritage Ridge Estates



Heritage Ridge Estates

- 112 total future lots
- Groundwork underway
- Homes starting late summer/early fall 2018
- Dooley Elementary





Future Residential Activity

Envision Oak Point



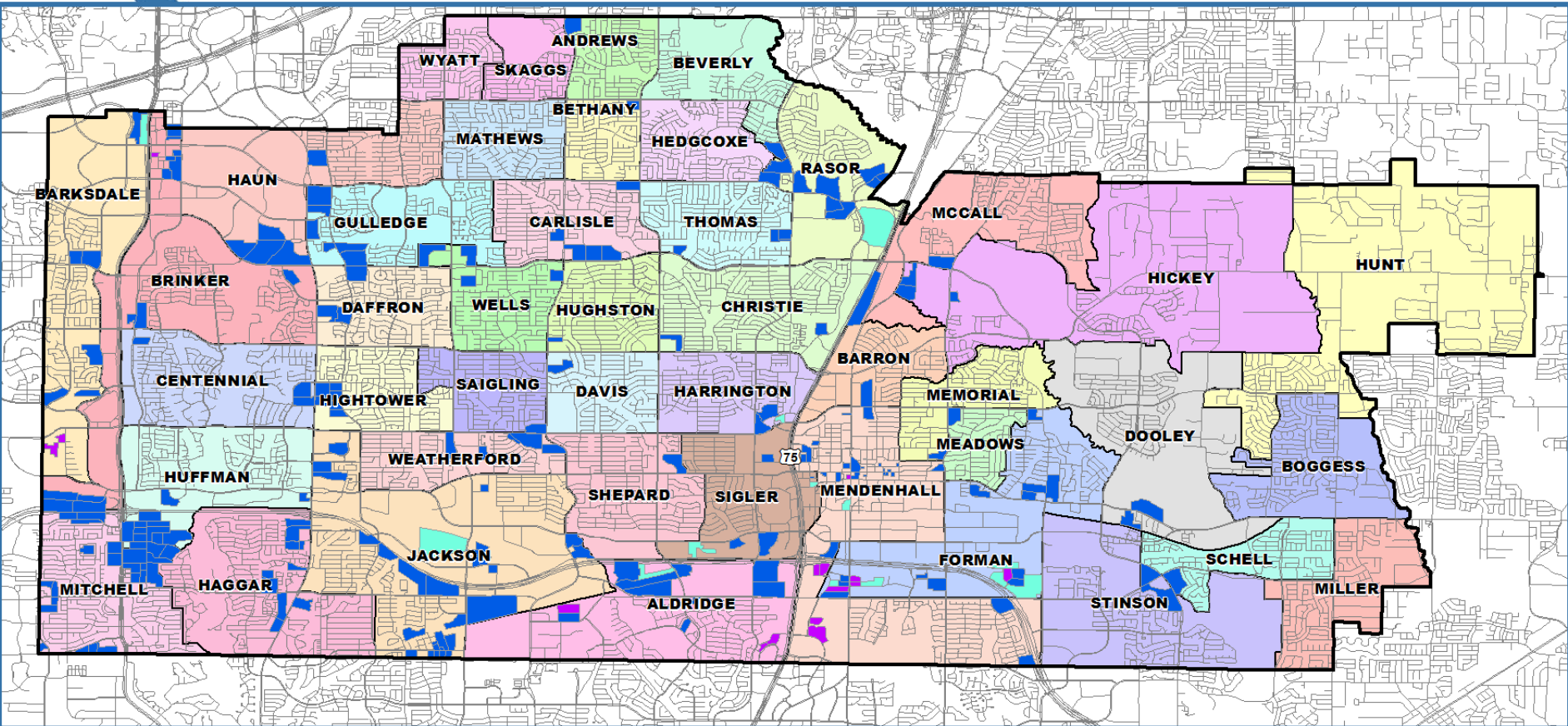
Envision Oak Point

- 1,152 possible future lots
- Project is currently in initial planning stages
- Lot totals have not yet been finalized
- Split between Barron, McCall, and Hickey Elementary zones





District Multi-family Overview



- There are currently more than 55,800 existing multi-family units within Plano ISD
- There are more than 5,250 units under construction that are expected to impact the district over the next 1-2 years
- The district has nearly 7,300 future units planned

Existing MF

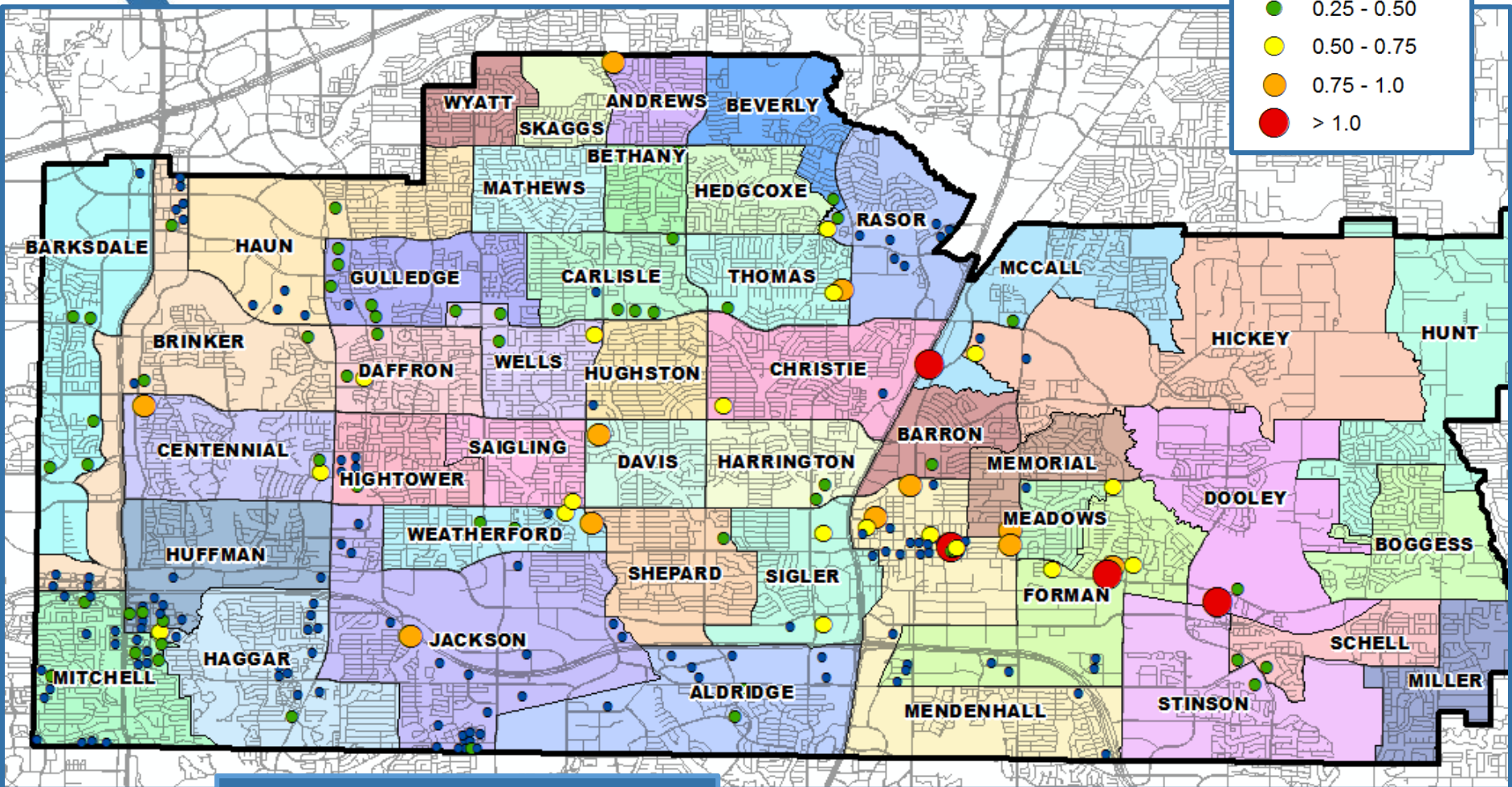
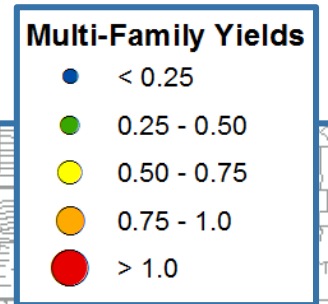
MF Under Const.

Future MF





Multi-family Yield Analysis



- Plano ISD has more than 13,570 students in roughly 55,840 multi-family units
- The average MF unit yields 0.24 students





Student Distribution Analysis

	2014-15	2015-16	2016-17	2017-18	3 Year Difference
Total Students	54,861	54,513	54,214	53,888	-973
Out of District	619	647	706	892	273
Unmatched	254	340	80	73	-181
Total Students (Geocoded Inside District)	53,988	53,526	53,428	52,923	-1,065
Multi-Family					
Students in MF	12,715	12,911	13,307	13,574	859
MF Units	51,268	52,204	52,590	55,844	4,576
% Students in MF	23.55%	24.12%	24.91%	25.65%	2.1%
MF Yield	0.248	0.247	0.253	0.243	-0.005
Single Family					
Students in SF	41,273	40,615	40,121	39,349	-1,924
SF Parcels	85,622	86,049	86,521	86,987	1,365
% Students in SF	76.45%	75.88%	75.09%	74.35%	-2.1%
SF Yield	0.482	0.472	0.464	0.452	-0.030



Ten Year Forecast

By Grade Level

Year (Oct.)	EE/PK	K	1st	2nd	3rd	4th	5th	6th	7th	8th	9th	10th	11th	12th	Total	Growth	% Growth
2013/14	1,661	3,805	3,985	3,934	4,059	4,166	4,158	4,059	4,218	4,344	4,363	4,133	3,958	3,979	54,822		
2014/15	1,619	3,756	3,972	3,964	3,983	4,035	4,190	4,061	4,138	4,248	4,409	4,131	4,118	4,065	54,689	-133	-0.2%
2015/16	1,516	3,633	3,848	4,055	4,077	4,001	4,089	4,179	4,140	4,179	4,379	4,244	4,095	4,167	54,602	-87	-0.2%
2016/17	1,573	3,533	3,730	3,891	4,132	4,090	3,970	4,076	4,199	4,154	4,280	4,190	4,219	4,136	54,173	-429	-0.8%
2017/18	1,774	3,548	3,642	3,797	3,949	4,151	4,109	3,980	4,106	4,262	4,261	4,062	4,159	4,227	54,027	-146	-0.3%
2018/19	1,774	3,574	3,683	3,706	3,866	3,965	4,177	4,086	4,045	4,148	4,362	4,100	4,037	4,214	53,737	-290	-0.5%
2019/20	1,774	3,697	3,711	3,756	3,778	3,881	3,973	4,163	4,158	4,122	4,255	4,203	4,073	4,084	53,628	-109	-0.2%
2020/21	1,774	3,621	3,852	3,762	3,834	3,798	3,911	3,930	4,223	4,215	4,226	4,095	4,168	4,098	53,507	-121	-0.2%
2021/22	1,774	3,776	3,805	3,919	3,816	3,853	3,835	3,871	3,981	4,281	4,328	4,074	4,068	4,210	53,591	84	0.2%
2022/23	1,774	3,759	3,902	3,846	3,975	3,837	3,877	3,798	3,932	4,042	4,353	4,168	4,042	4,103	53,408	-183	-0.3%
2023/24	1,774	3,754	3,889	3,945	3,896	3,980	3,853	3,844	3,851	3,987	4,155	4,191	4,142	4,071	53,332	-76	-0.1%
2024/25	1,774	3,781	3,924	3,940	4,018	3,909	4,013	3,807	3,897	3,906	4,096	4,001	4,156	4,179	53,401	69	0.1%
2025/26	1,774	3,802	3,941	3,963	4,009	4,043	3,941	3,971	3,859	3,952	4,012	3,944	3,976	4,192	53,379	-22	0.0%
2026/27	1,774	3,847	3,982	3,983	4,031	4,032	4,081	3,895	4,026	3,911	4,061	3,862	3,911	4,008	53,404	25	0.0%
2027/28	1,774	3,882	4,018	4,035	4,069	4,054	4,069	4,025	3,950	4,040	4,019	3,911	3,837	3,945	53,628	224	0.4%

*Yellow box = largest grade per year

*Green box = second largest grade per year

Ten Year Forecast

By Elementary Campus

Campus	Current	ENROLLMENT PROJECTIONS										Program Capacity	Functional Capacity
	2017/18	2018/19	2019/20	2020/21	2021/22	2022/23	2023/24	2024/25	2025/26	2026/27	2027/28		
Head Start	146	146	146	146	146	146	146	146	146	146	146		
Aldridge Elementary School	615	651	702	732	775	801	786	773	764	748	730	724	615
Andrews Elementary School	591	561	540	530	528	554	557	550	551	557	585	746	634
Barksdale Elementary School	659	679	707	715	719	728	720	713	703	705	707	746	634
Barron Elementary School	395	393	392	397	418	439	439	440	433	432	430	658	559
Beaty Early Childhood	453	453	453	453	453	453	453	453	453	453	453		
Bethany Elementary School	384	368	352	352	364	358	366	365	363	360	359	566	481
Betty Haun Elementary School	636	642	596	615	603	582	570	573	573	572	585	746	634
Beverly Elementary School	485	466	456	460	459	466	488	498	499	506	513	742	631
Boggess Elementary School	566	535	525	515	510	536	541	549	544	537	533	922	784
Brinker Elementary School	656	654	644	639	647	650	651	652	656	662	667	768	653
Carlisle Elementary School	549	556	574	588	594	572	567	561	557	559	565	632	537
Centennial Elementary School	551	539	541	535	553	550	541	550	549	563	555	658	559
Christie Elementary School	738	738	724	701	714	717	705	716	719	712	697	1,066	906
Daffron Elementary School	587	576	549	541	548	554	567	574	578	583	583	724	615
David McCall Elementary School	557	558	577	580	567	559	582	625	654	694	736	724	615
Davis Elementary School	435	431	426	427	440	453	457	467	471	477	480	566	481
Dooley Elementary School	368	375	385	398	425	442	452	458	456	452	445	610	519
Forman Elementary School	598	586	579	580	591	600	608	625	633	635	635	900	765
Gulledge Elementary School	664	682	696	694	683	690	673	663	647	643	630	702	597
Harrington Elementary School	411	415	435	429	434	432	440	441	447	452	451	750	638
Hedgcoxe Elementary School	429	439	445	457	473	487	480	481	477	481	480	566	481
Hickey Elementary School	546	577	576	582	601	597	623	665	697	738	778	746	634
Huffman Elementary School	469	461	481	477	473	480	477	485	486	503	507	680	578
Hughston Elementary School	374	371	365	375	393	393	388	395	397	407	415	702	597
Isaacs Early Childhood	424	424	424	424	424	424	424	424	424	424	424		
Jackson Elementary School	550	536	550	565	586	587	610	627	648	672	687	974	828
John Hightower Elem School	567	571	579	584	588	592	600	599	608	616	615	680	578
Martha Hunt Elementary School	702	682	648	641	650	666	684	704	708	711	722	900	765

*Yellow box = Over stated functional capacity

*Red box = Over stated program capacity

Ten Year Forecast

By Elementary Campus

Campus	Current	ENROLLMENT PROJECTIONS										Program Capacity	Functiona l Capacity
	2017/18	2018/19	2019/20	2020/21	2021/22	2022/23	2023/24	2024/25	2025/26	2026/27	2027/28		
Mathews Elementary School	475	456	449	434	448	440	444	451	455	464	471	790	672
Meadows Elementary School	482	475	468	470	477	481	501	512	520	522	522	724	615
Memorial Elementary School	510	497	497	493	497	513	507	511	509	515	519	746	634
Mendenhall Elementary School	594	580	576	570	576	574	586	595	600	604	608	746	634
Miller Elementary School	400	397	376	358	366	371	365	370	373	379	387	790	672
Mitchell Elementary School	801	807	787	801	794	789	753	739	722	710	691	948	806
Pearson Early Childhood	330	330	330	330	330	330	330	330	330	330	330		
Razor Elementary School	444	436	448	449	449	465	459	458	456	451	447	588	500
Rose Haggar Elementary School	595	576	557	552	566	551	563	560	561	568	574	724	615
Saigling Elementary School	412	422	427	435	441	452	456	462	455	453	458	614	522
Schell Elementary School	676	649	623	604	582	582	589	593	608	629	634	724	615
Shepard Elementary School	474	474	486	495	498	503	516	524	529	535	540	724	615
Sigler Elementary School	443	444	438	430	427	438	441	455	457	467	473	720	612
Skaggs Elementary School	417	383	338	327	315	312	324	333	343	356	365	724	615
Stinson Elementary School	647	642	625	633	623	625	611	622	630	644	660	834	709
Thomas Elementary School	665	659	668	647	647	645	639	640	637	635	624	1,066	906
Weatherford Elementary School	488	466	462	457	456	473	479	478	481	481	479	676	575
Wells Elementary School	535	530	520	523	534	522	527	540	541	551	562	614	522
Wyatt Elementary School	477	457	428	412	393	396	406	414	425	436	444	812	690
ELEMENTARY SCHOOL TOTALS	24,970	24,745	24,570	24,552	24,778	24,970	25,091	25,359	25,473	25,730	25,901	32,762	27,847
Elementary Absolute Growth	51	-225	-175	-18	226	192	121	268	114	257	171		
Elementary Percent Growth	0.20%	-0.90%	-0.71%	-0.07%	0.92%	0.77%	0.48%	1.07%	0.45%	1.01%	0.66%		

*Yellow box = Over stated functional capacity

*Red box = Over stated program capacity



Ten Year Forecast

By Middle School Campus

Campus	Current	ENROLLMENT PROJECTIONS										Program Capacity	Functional Capacity
	2017/18	2018/19	2019/20	2020/21	2021/22	2022/23	2023/24	2024/25	2025/26	2026/27	2027/28		
Armstrong Middle School	711	717	715	723	704	695	684	691	704	741	773	1,385	1,178
Bowman Middle School	998	979	975	938	946	964	942	930	937	967	1,031	1,686	1,433
CM Rice Middle School	1,079	1,024	1,017	963	932	816	767	723	734	744	748	1,367	1,162
Carpenter Middle School	671	691	723	758	742	743	726	730	718	712	722	1,631	1,386
Frankford Middle School	1,057	1,080	1,111	1,094	1,073	1,081	1,106	1,109	1,098	1,086	1,095	1,367	1,162
Haggard Middle School	818	825	866	850	803	781	795	802	835	848	868	1,234	1,049
Hendrick Middle School	724	715	681	679	669	653	642	640	677	691	702	1,163	988
Murphy Middle School	1,264	1,215	1,171	1,125	1,069	955	901	871	921	943	966	1,408	1,197
Renner Middle School	1,253	1,221	1,231	1,181	1,186	1,205	1,228	1,239	1,272	1,227	1,239	1,367	1,162
Robinson Middle School	1,013	1,012	1,098	1,153	1,204	1,138	1,140	1,104	1,105	1,097	1,093	1,410	1,199
Schimelpfenig Middle School	860	838	828	844	792	802	802	834	808	808	793	1,626	1,382
Wilson Middle School	833	829	852	910	899	891	896	925	965	978	984	1,470	1,249
Otto Middle School	1,063	1,129	1,171	1,146	1,110	1,044	1,049	1,008	1,004	986	997	1,439	1,223
MIDDLE SCHOOL TOTALS	12,344	12,275	12,439	12,364	12,129	11,768	11,678	11,606	11,778	11,828	12,011	18,553	15,770
Middle School Absolute Growth	-82	-69	164	-75	-235	-361	-90	-72	172	50	183		
Middle School Percent Growth	-0.66%	-0.56%	1.34%	-0.60%	-1.90%	-2.98%	-0.76%	-0.62%	1.48%	0.42%	1.55%		

*Yellow box = Over stated functional capacity

*Red box = Over stated program capacity



Ten Year Forecast

By High School and Senior High School Campus

Campus	Current	ENROLLMENT PROJECTIONS										Program Capacity	Functional Capacity
	2017/18	2018/19	2019/20	2020/21	2021/22	2022/23	2023/24	2024/25	2025/26	2026/27	2027/28		
Clark High School	1,457	1,442	1,402	1,325	1,340	1,368	1,351	1,312	1,300	1,323	1,318	2,439	2,073
Jasper High School	1,440	1,410	1,411	1,316	1,299	1,447	1,400	1,314	1,275	1,180	1,187	2,531	2,151
Shepton High School	1,466	1,458	1,413	1,438	1,482	1,424	1,400	1,408	1,428	1,469	1,469	2,077	1,765
Vines High School	1,033	1,027	1,018	991	1,046	1,075	1,043	1,025	1,003	1,039	1,077	2,165	1,841
Williams High School	1,110	1,233	1,254	1,325	1,371	1,343	1,306	1,274	1,273	1,248	1,201	2,204	1,873
McMillen High School	1,216	1,246	1,311	1,278	1,217	1,216	1,198	1,116	1,029	1,016	1,030	1,916	1,629
Academy High School	447	453	466	467	471	470	470	471	471	471	471	600	600
HIGH SCHOOL TOTALS	8,169	8,269	8,275	8,140	8,226	8,343	8,168	7,920	7,779	7,746	7,753	13,932	11,932
High School Absolute Growth	-119	100	6	-135	86	117	-175	-248	-141	-33	7		
High School Percent Growth	-1.44%	1.22%	0.07%	-1.63%	1.06%	1.42%	-2.10%	-3.04%	-1.78%	-0.42%	0.09%		
Plano Senior High School	2,724	2,681	2,606	2,586	2,541	2,426	2,497	2,562	2,506	2,450	2,412	3,494	2,970
Plano East Senior High School	3,041	2,993	3,031	3,193	3,281	3,334	3,308	3,279	3,231	3,115	3,030	3,469	2,949
Plano West Senior High School	2,772	2,767	2,700	2,665	2,629	2,560	2,583	2,668	2,605	2,528	2,514	3,097	2,632
SENIOR HIGH SCHOOL TOTALS	8,537	8,441	8,337	8,444	8,451	8,320	8,388	8,509	8,342	8,093	7,956	10,060	8,551
Senior HS Absolute Growth	5	-96	-104	107	7	-131	68	121	-167	-249	-137		
Senior HS Percent Growth	0.06%	-1.12%	-1.23%	1.28%	0.08%	-1.55%	0.82%	1.44%	-1.96%	-2.98%	-1.69%		
Plano J J A E P	7	7	7	7	7	7	7	7	7	7	7		
DISTRICT TOTALS	54,027	53,737	53,628	53,507	53,591	53,408	53,332	53,401	53,379	53,404	53,628	75,307	64,100
District Absolute Growth	-146	-290	-109	-121	84	-183	-76	69	-22	25	224		
District Percent Growth	-0.3%	-0.5%	-0.2%	-0.2%	0.2%	-0.3%	-0.1%	0.1%	0.0%	0.0%	0.4%		

*Yellow box = Over stated functional capacity

*Red box = Over stated program capacity



Summary

- Plano's unemployment rate is below 3.5%.
- The district closed more than 450 homes for the second straight year.
- Dooley Elementary accounted for 31% of all new home annual closings in PISD.
- Within Plano ISD there are nearly 1,300 lots currently available to build on.
- Plano ISD can expect to see relatively flat enrollment growth as large exiting classes offset new housing impacts.
- 2022/23 enrollment projection: 53,408 students.
- Plano ISD is projected to enroll 53,628 students for the 2027/28 school year.